

New

Thermal insulated drain hose with coupling joint for drain up piping of package air conditioner.



LINE UP

DSH-UP SERIES

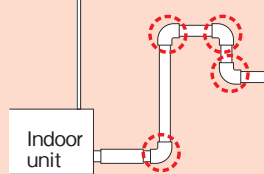
Integration of several adhesive connections

Reducing man-hour

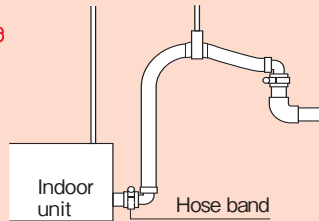
Reducing risk of water leakage

Piping example with vinyl pipe

High risk of water leakage by several adhesive connections



Piping example with DSH-UP Series



Features

Reduction of risk for water leakage

Due to the connection method by hose band, risk of water leakage which occurred by adhesive missing or poor glue condition will be reduced, and quality of connection by worker will become stable.

Besides, all of DSH-UP Series are checked by an airtightness test.

Secure connection

Due to DSH-UP Series made of transparent resin, the insertion depth of vinyl pipe can be confirmed and secure connection will be obtained. Besides, it is possible to confirm water passing.

Reduction of man-hour for pipe connection

Connection points are reduced with DSH-UP Series and therefore man-hour is reduced, too.

DSH-UP Series have thermal insulated drain hose

Any works for thermal insulation are not needed with DSH-UP.

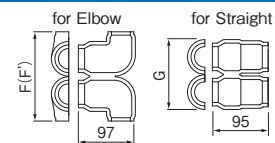
	Dimensions (mm)	Code No.	Part No.	A	B	C	*Outer diameter of Applicable vinyl pipe		Cover size			Pcs/Pkg
							φD	φE	F	F'	G	
Elbow & Straight ES		☑ 08360	DSH-UP20E20S-07	700	791	807	26±0.2	26±0.2	152	-	119	10
		☑ 08361	DSH-UP20E25S-07				32±0.2	152	-	131	10	
		☑ 08362	DSH-UP25E20S-07			810	26±0.2	164	-	119	10	
		☑ 08363	DSH-UP25E25S-07				32±0.2	164	-	131	10	
		☑ 08370	DSH-UP20E20S-10	1000	1091	1107	26±0.2	26±0.2	152	-	119	10
		☑ 08371	DSH-UP20E25S-10				32±0.2	152	-	131	10	
		☑ 08372	DSH-UP25E20S-10			1110	26±0.2	164	-	119	10	
		☑ 08373	DSH-UP25E25S-10				32±0.2	164	-	131	10	
Elbow & Elbow EE		☑ 08364	DSH-UP20E20E-07	700	768	800	26±0.2	26±0.2	152	152	-	10
		☑ 08365	DSH-UP20E25E-07				32±0.2	152	164	-	10	
		☑ 08366	DSH-UP25E25E-07			806	32±0.2	32±0.2	164	164	-	10
		☑ 08374	DSH-UP20E20E-10	1000	1068	1100	26±0.2	26±0.2	152	152	-	10
		☑ 08375	DSH-UP20E25E-10				32±0.2	152	164	-	10	
		☑ 08376	DSH-UP25E25E-10			1106	32±0.2	32±0.2	164	164	-	10
Elbow & Elbow ER		☑ 08367	DSH-UP20E20R-07	700	768	800	26±0.2	26±0.2	152	152	-	10
		☑ 08368	DSH-UP20E25R-07				32±0.2	152	164	-	10	
		☑ 08369	DSH-UP25E25R-07			806	32±0.2	32±0.2	164	164	-	10
		☑ 08377	DSH-UP20E20R-10	1000	1068	1100	26±0.2	26±0.2	152	152	-	10
		☑ 08378	DSH-UP20E25R-10				32±0.2	152	164	-	10	
		☑ 08379	DSH-UP25E25R-10			1106	32±0.2	32±0.2	164	164	-	10

* **Caution** Use for only the above applicable vinyl pipe.

Materials

Thermal insulated drain hose (Insulation)	PVC (Foamed PE)
Coupling joint	PVC
Hose band	SUS
Thermal insulation cover	Foamed PE
Thermal insulation adhesive tape (W50mm × L150mm)	Foamed PE

Thermal Insulation Cover

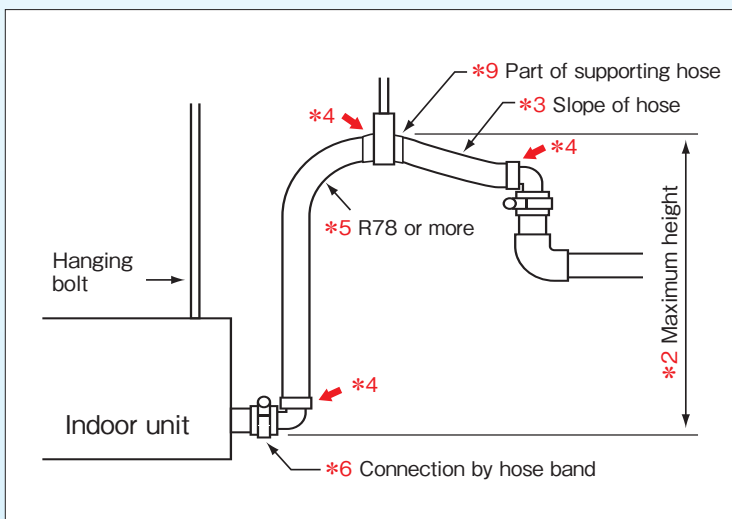


Set Details

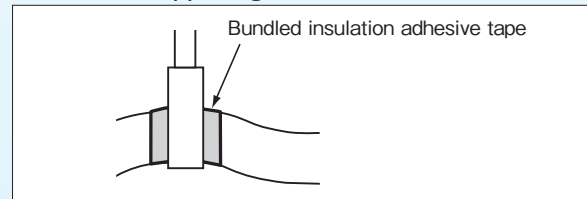
	Elbow & Straight ES	Elbow & Elbow EE	Elbow & Elbow ER
Thermal insulated drain hose with coupling joint	1	1	1
Hose band	2 pcs	2 pcs	2 pcs
Thermal insulation cover for Straight	1 pc	-	-
Thermal insulation cover for Elbow	1 pc	2 pcs	2 pcs
Thermal insulation adhesive tape	1	1	1

CAUTION of Installation

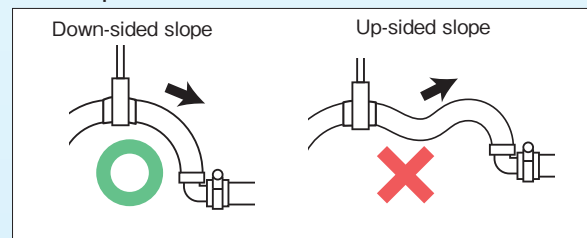
- *1 DSH-UP series are exclusive use for drain up piping of package air-conditioners. Don't use for other applications.
- *2 Set up the hose within the maximum height which each manufacturer of air conditioners instructs.
- *3 Don't make an up-sided slope from coupling joint to vinyl pipe to prevent a counter-flow of the drain water.
- *4 Set up DSH-UP not to apply too much load at three parts “*4” where the hose is bent. If any of three parts is applied with too much load, the part is deformed or damaged.
- *5 Bend the hose of DSH-UP with more than 78mm of the bending inner side radius of hose.
- *6 Tighten hose band until any tightening holes are not seen at all confirming the hose band fits in center of concavity of coupling joint and vinyl pipe is inserted 30mm to coupling joint (Estimated tightening torque 400Ncm)
- *7 Use the hose band enclosed in carton box of DSH-UP.
- *8 Need thermal insulation work on coupling joint, otherwise dew condensation may be occurred depending on the environmental situation to be used.
- *9 Wind bundled insulation adhesive tape around a support part of the hose to prevent from destroy of the insulation layer and dew condensation.
- *10 DSH-UP series are only indoor use. Don't use DSH-UP for outdoor.
- *11 It is possible for DSH-UP to connect by not only hose band but also adhesive.



*9 Part of supporting hose



*3 Slope of hose



*6 Connection by hose band

<p>Band fits in center of concavity</p>	<p>Band is not fitted in concavity</p>	<p>Insert the pipe into coupling joint 30mm in length</p>	<p>Any holes are not seen</p>
		<p>Tightening holes</p>	<p>Some holes are still seen</p>

●Remarks ... Quality, technical information & packing details in the leaflet are subject to change without notice.

INABA DENKI SANGYO CO., LTD.
Inaba Denko Products Overseas Sales Department

4-11-14, ITACHIBORI, NISHI-KU, OSAKA, JAPAN 550-0012
Tel: +81 (0) 6-4391-1920 Fax: +81 (0) 6-4391-1935
E-MAIL: inabadenko-overseas@gr-inaba.com <http://www.INABA-DENKO.com/>